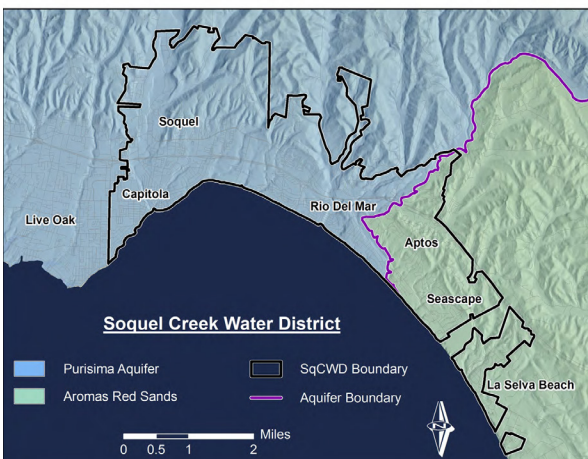


Soquel Creek Water District is a public agency dedicated to providing a safe, high quality, reliable, and sustainable water supply to meet our community's present and future needs in an environmentally sensitive and economically responsible manner.

CUSTOMERS SERVED

The District provides water to 40,400 mostly residential customers through more than 14,400 connections in mid-Santa Cruz County. Capitola is the only incorporated city within the District's service area. Unincorporated communities include Aptos, La Selva Beach, Opal Cliffs, Rio Del Mar, Seascape and Soquel. The District does not have any agricultural customers.



BOARD OF DIRECTORS AND STAFF

The District is governed by a five-member board of directors elected to four-year terms by voters in its service area. Their public meetings are held the first and third Tuesday of each month at 6:00 p.m. at the Capitola City Council Chambers. The District's staff consists of approximately 43 employees assigned to five departments: Administration, Engineering, Financial/Business Services, Conservation/Field Customer Service, and Operations and Maintenance.

FUNDING

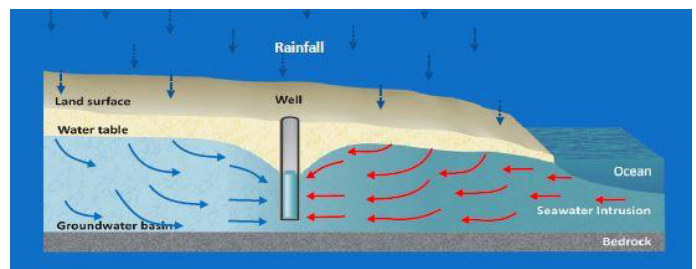
All District expenses, projects and programs are paid for through water rates and charges to customers, new development fees, grants, loans and bonds. The District does not receive any tax revenues.

WATER FROM SOURCE TO CUSTOMER

Currently, all of the District's water comes from two over-drafted groundwater aquifers underlying its service area; the Purisima Aquifer and the Aromas Red Sands Aquifer. The District operates and maintains 15 active wells, 2 standby wells and 18 storage tanks and delivers water to its customers through more than 166 miles of pipeline.

PROTECTING THE WATER SUPPLY

Using 80 strategically-placed monitoring wells, the District monitors groundwater levels and water quality. Maintaining adequate groundwater levels prevents salty ocean water from moving further inland and contaminating the water supply. This is called seawater intrusion and it is the largest challenge to our coastal groundwater supply.



COMMUNITY WATER PLAN

The Community Water Plan is based on community input and serves as the District's roadmap to meeting our goal of sustainability by 2040. This plan includes

promoting water conservation and our water neutral development to reduce groundwater extractions; being proactive with our groundwater management program to protect our aquifers; and seeking new water supplies to meet our water needs.