

What's On Tap



AT THE SOQUEL CREEK WATER DISTRICT

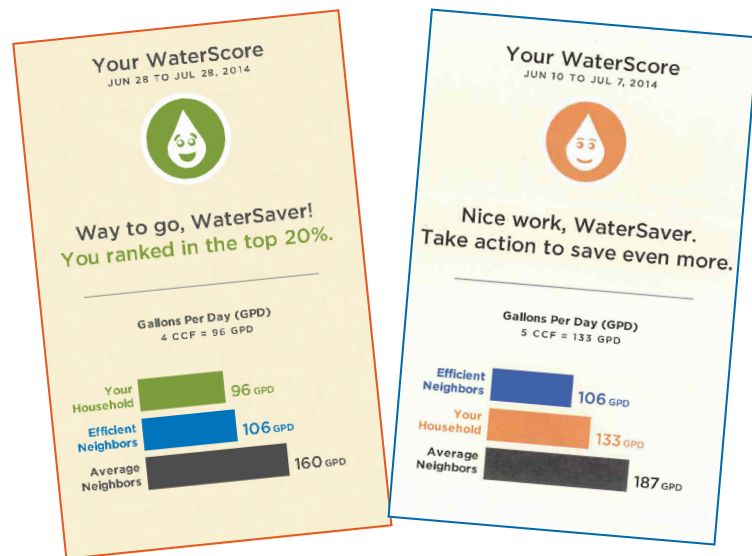
New Home Water Reports Give Customers More Tools to Conserve

WE'RE ROLLING OUT A NEW, customized conservation tool to help our customers conserve water. In early 2015, single-family residential customers will begin receiving monthly informational "home water reports" separate from their monthly water bill. These reports are intended to help customers understand how much water they use and the most effective ways to use less. Information sent each month will include:

- How many gallons of water per day your household uses.
- Whether your household's water use is efficient, average or high when compared to that of similar-sized homes on similar-sized lots with the same number of occupants (vacation rentals excluded).
- Personalized recommendations for cost-effective ways to conserve.
- Access to online information and graphics about your household's water use.

The reports use county data on home and lot sizes and estimate household occupancy. If your household occupancy is incorrect or changes you can update the information online for more accurate, customized reports. Household occupancy information is voluntary and will not affect your water bill.

Since the fall of 2013 the District has piloted



home water reports with one third of our single-family residential customers. Analysis of the year-long pilot showed that customers receiving home water reports used about five percent less water than the control group not receiving reports--even during the summer when overall water use dropped twenty percent. The pilot also showed home water reports to be a cost-effective tool for customers save water.

For more information visit www.soquelcreekwater.org/customer-service/track-water-use-and-savings.

Customers who have provided the District with email addresses will receive the water reports electronically and all others will receive a paper version with the option to switch to email.

Our Board of Directors meets on the first and third Tuesday of each month at 7:00 pm at the Capitola City Council Chambers. Meetings are open to everyone and comments from the public are heard at each meeting.

Our Community Water Plan:

Conserving, Protecting and Creating Sustainable Water Resources

THIS YEAR, OUR CUSTOMERS ACHIEVED unprecedented conservation efforts – and we thank you! Since February 2014, we have seen a remarkable 20% reduction in water use. However, the District continues to operate under a Stage 3 water shortage and groundwater emergency.

Even if the drought ends, our long-term groundwater shortage does not. Our shared groundwater basin is currently in a state of overdraft, which means more water has historically been extracted than naturally replenished by rainfall. This has led to seawater intrusion at our coastline which, if left unresolved, will eventually move inland

and contaminate the groundwater drinking wells.

Our **Community Water Plan** includes a diversified set of programs and projects that include carefully monitoring groundwater levels, seeking new water sources, exploring groundwater recharge projects, collaborating with others who use the shared groundwater basin, and requiring those seeking new water connections to offset their expected water use by funding conservation and other projects.



We remain committed to addressing our long-term groundwater shortage and continue to move forward with multiple solutions.

Water board governance

SOQUEL CREEK WATER DISTRICT IS LED by a five-person Board of Directors elected to four-year terms by registered voters throughout the District's service area. The Directors are responsible for policy decisions, which govern the operations of the District. Incumbents Bruce Jaffe and Rick Meyer were re-elected in November 2014 along with newly-elected Carla Christensen to serve from 2015 through 2018.

Director Jaffe has been on the board since 2002. He is a research geologist/oceanographer for USGS and resides in Aptos with his wife Denise and two children. **Director Meyer** was appointed to the board in 2012. He owns an energy auditing business and has lived in Soquel and Aptos for the last 12 years with his wife Suzanne. **Director Christensen** has been a resident and active community member in the mid-county area for over 25 years. She is a retired environmental scientist and lives in Capitola with her husband Tom Mader and their children.

Also at the December 16th meeting, the board elected Director **Bruce Daniels** as President and Director **Tom LaHue** as Vice-President for 2015.

The Board of Directors provides guidance, strategy, and decision-making for policies on a broad range of issues. All board meetings are open to the public and those interested in attending are welcome.



Directors Carla Christensen and Rick Meyer getting sworn in at the December 16th meeting.

New Water Rates Go into Effect in January

AS A RESULT of drought conditions and the detection of seawater intrusion at our coastline, the District declared a Stage 3 water shortage and groundwater emergency on June 17, 2014 and asked customers to increase conservation efforts. In order to maintain operating revenue and customer service during the period of reduced water use, it was necessary to enact Stage 2 Emergency water rates in July 2014. The Stage 2 emergency rates will be increased for all water consumed beginning January 1, 2015 and the charges will first appear on your February billing statement.

For more information on rates please refer to the Customer Service tab on our website at www.soquelcreekwater.org

Single-family residences (SFR) will be subject to the following rates:

	2014 Rates	2014 plus Stage 2	2015 Rates	2015 plus Stage 2
SFR Service Charge				
All meter sizes	\$23.21	\$23.21	\$24.83	\$24.83
SFR Quantity Charge				
Tier 1 (1 to 3 units*)	\$3.80	\$4.53	\$4.00	\$4.77
Tier 2 (4 to 7 units*)	\$6.40	\$7.63	\$7.00	\$8.34
Tier 3 (8 to 15 units*)	\$9.75	\$11.62	\$11.00	\$13.11
Tier 4 (16 + units*)	\$14.50	\$17.28	\$16.00	\$19.07
Fire Service Charge**				
2 inch or smaller	\$4.38	\$4.38	\$4.96	\$4.96

*1 unit = 748 gallons of water

**Some customers may be subject to a fire service charge

Multi-family residences (parcels containing three or more dwelling units) will be billed according to the following tiered water quantity charges (tier thresholds are determined by multiplying the upper tier limit by the number of dwelling units):

Multi-family Quantity Charge	2014 Rates	2014 plus Stage 2 Emergency Rates	2015 Rates	2015 plus Stage 2 Emergency Rates
Tier 1 (1 to 2 units*)	\$5.30	\$6.32	\$5.60	\$6.68
Tier 2 (3 to 5 units*)	\$6.55	\$7.81	\$7.10	\$8.46
Tier 3 (6 to 10 units*)	\$7.80	\$9.30	\$8.60	\$10.25
Tier 4 (11 + units*)	\$9.10	\$10.85	\$10.20	\$12.16

*1 unit = 748 gallons of water

The non-domestic or commercial Stage 2 emergency water quantity rate will increase from \$7.71 to \$8.40 per unit.

It is anticipated that the Stage 2 emergency rates will remain in effect through April until an analysis of annual rainfall through March can be performed. Depending on the outcome of that analysis; emergency rates could continue unchanged, increase, or be completely eliminated.

What's On Tap is an in-house publication printed quarterly for the customers of our District. Forward your comments to the editor at P.O. Box 1550, Capitola, CA 95010.

Employee Spotlight:

DAVID PATTEN, Equipment Mechanic

DAVE BEGAN WORKING on mechanical equipment as a young boy fixing sewing machines and radio control cars, when his love for boat motors lead him to a family friend's boat shop. After seeing his innate mechanical skills in action, his father's friend "hired" him at the tender age of 11! Dave worked in that boat shop for the next 10 years, throughout middle school and while attending Soquel High, before coming to work for Soquel Creek Water District.

Since January 2006, he has been in charge of making sure the District's fleet of vehicles is in safe, working order. This includes 32 vehicles, 3 tractors, 12 generators, 2 excavators, a forklift and many other small machines and equipment –that all help to keep our water supply flowing.



Dave is a second-generation Soquel Creek Water District employee, and one of the most likable guys you'll ever meet. When he's not working on our fleet or in the shop, you may find him on the road competitively shooting sporting clays--he ranks among the top 5% of competitive shooters in the state! Dave enjoys camping, hunting, fishing, racing RC cars, and spending time with his wife (who he's known since elementary school) and their two cats.

Next time you see one of our District vehicles on the road or in action, think about Dave Patten who works hard to keep our fleet, heavy equipment, and emergency generators in safe, working order.



5180 Soquel Drive
Soquel, CA 95073
P.O. Box 1550
Capitola, CA 95010

Phone: 831-475-8500
Fax: 831-475-4291
Email: custserv@soquelcreekwater.org

www.soquelcreekwater.org

other ways to connect with us!



CONSERVATION *plus* Latest Update: On November 18, 2014 the Board voted to continue exploring water budgets during a rate study in 2015 while encouraging current conservation to continue. To stay tuned on this program, visit : www.soquelcreekwater.org/conserving-water/conservationplus