

How to reach us

If you have questions, comments or would like more information on water issues, please contact us or visit our web site.

TEL: (831) 475-8500
FAX: (831) 475-4291
EMAIL: custserv@soquelcreekwater.org
MAIL TO: P.O. Box 158
Soquel, CA 95073-0158
WEB SITE: www.SoquelCreekWater.com
www.WaterSavingTips.org

Soquel Creek Water District is a nonprofit, local government agency with a locally elected Board of Directors. The District provides water supply and water resource management to more than 45,000 customers within a 17-square mile area of mid-Santa Cruz County.

The Board of Directors meet on the first and third Tuesday of each month at 7:00PM at the District's office at 5180 Soquel Drive. Meetings are open to everyone and comments from the public are heard at each meeting.

Board of Directors
Daniel F. Kriege, *President*
Gary E. Hazelton, *Vice President*
John W. Beebe
Bruce Daniels
Nancy Wells

Laura D. Brown, *General Manager*

What's on Tap is an in-house publication for the customers of the District. Forward your comments to the editor at the address above.

Christopher J. Regan, *Editor*



"Using your water meter" *continued from page 2*

water off. Wait at least 15 to 30 minutes.

Reread the meter gauge to determine if any water has been used. If a leak is detected, likely culprits are toilets and irrigation systems.

How to check for toilet leaks

- ☒ Put several drops of food coloring in the toilet tank.
- ☒ After 20 minutes have elapsed, check the toilet bowl to see if colored water has escaped into it from the tank.
- ☒ If colored water shows up in the bowl, the toilet probably has a flapper leak. Replace or readjust the flapper.

How to find irrigation leaks

- ☒ Taller, greener vegetation or moss growing around the sprinkler heads are signs of a damaged or dirty valve. Clean and replace worn parts.
- ☒ Wet spots, mud, and erod-

ing soil may indicate a broken pipe or riser. Dry spots in your lawn could also be a sign that a sprinkler is damaged. To locate the source of the leak, dig around the sprinkler.

- ☒ Wet spots on pavement also indicate possible leaks. Watch your sprinklers to determine which one is showering the pavement. Turn off the water, and check the sprinkler head and riser. Sprinklers spouting geysers indicate broken sprinkler heads. Replace them. ♦

This article was reprinted courtesy of Sunset Magazine. For more information on conserving water and energy, pick up a free copy of Sunset Magazine's Smart Water and Energy Use in the West, at the District's headquarters office.

"Major construction projects" *continued from page 1*

Rio del Mar Cliffs Area. 3,331 linear feet of substandard water mains were replaced

Polo Drive Area. 2,470 linear

feet of substandard water mains were replaced.

Soquel Drive at Bargetto

Bridge. 1,335 linear feet of new water mains were installed in conjunction with the County's Soquel Village Improvement Project.

Storage Tanks

Ironwood Tank. A new, larger tank was installed to provide increased fire protection.

Fairway, Cornwell, Crestline and Mar Vista Tanks. Maintenance to extend the life of the tanks was completed and cathodic protection was installed in order to reduce the corrosion rate on these steel tanks.

Replacement Wells

Tannery Creek Well. A pump station to operate the new well that was drilled last year will soon be completed. ♦



What's ON TAP

At the Soquel Creek Water District

Volume 4, No. 5

Printed on Recycled Paper

September/October 2002

Major construction projects improve water quality, system reliability and fire protection

It's been a very busy construction season for the District. Over \$2.8 million of capital improvement projects will be completed by the end of October as part of the District's aggressive, multi-year effort to replace all undersized and/or leaky water mains; increase storage and pipe capacity to provide adequate fire

protection; replace wells that are reaching the end of their useful lives; and improve water quality. Following is a summary of the current major projects:

- **Water Quality Improvements.**
- **Garnet St. Treatment Plant.** A state-of-the-art treatment system will reduce iron and

- manganese levels in the water for much of the City of Capitola that is served by the District.
- The new filter units will be housed in a sound-insulated building. Cost \$940,000.

Main Replacements.

- **West Seacliff Area.** 3,700 linear feet of water main was replaced and backyard meters were relocated to the street.
- "Major construction projects"
continued on back page

Aptos Little League All-Stars sparkle

Congratulations to the Aptos Little League All-Stars, who became the first Santa Cruz County team to earn a berth in the Little League World Series in Williamsport, Pennsylvania.

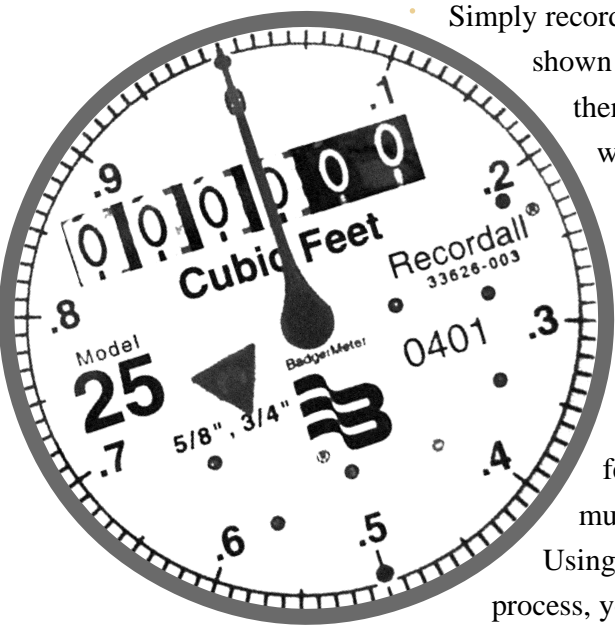
The team includes: Kyle Anderson, Jarred Bachan, Andrew Biancardi, Justin Burns, Kevin Eichhorn, Kevin Farmer, Brian Godoy, Mark Lamothe, Drew McCauley,

Tyler Raymond, Curtis Worden, Caesar Zermeno, Manager Dave Anderson, and Coach Mark Eichhorn. You've made our community proud. ♦



Using your water meter to track water use

Your water meter can tell you how much water you're using during a given time period, and can help you monitor the amount of water you use indoors and outdoors on a daily basis. It can also help you figure out how much water each appliance uses, and whether there's a leak inside or outside the house. But first you'll need to learn to read it.



How to read your water meter

Most water meters are located in in-ground concrete boxes near the street curb. To expose the gauge, carefully remove the cover and flip open the meter's cap.

Straight reading meters (the simplest, most common type), can tell you how much water you're using in a given period.

Simply record the figures shown on one day and then again a day or week later, and subtract the original reading from the new reading. To convert cubic feet to gallons, multiply by 7.48. Using the same process, you can test the

amount of water used to take showers or irrigate your garden. Turn off all water inside and outside the house, read the meter, then run sprinklers; take a new reading.

Most meters come with a leak detector—a small triangle in the center of the meter, which rotates when any amount of water is used. If the triangle rotates even when all the water is turned off, there's a leak somewhere.

How your meter can help you check for leaks.

To check for leaks, turn off all water faucets in your home (including your ice maker). **Do not turn the water off at the meter.** If your meter doesn't have a leak detector, it will have a sweep hand. Record the meter reading or mark the needle position with a pencil or piece of tape. Keep the

*“Using your water meter”
continued on back page*

Water efficiency and your water softener

Hardness in water is the most common water quality problem reported by U.S. consumers. In fact, hard water is found in more than 85 percent of the United States.

Hard water occurs when excess minerals in the water create certain nuisance problems. While these water problems can be frustrating, water hardness is not a safety issue. Hard water is safe for

drinking, cooking, and other household uses.

Many homeowners install water softeners to treat hard water without any regard to the water efficiency of the unit. You may be wasting water and money by operating your water softener inappropriately.

Make the most efficient use of your softener.

Use softened water only

where needed, for example washing and bathing.

Use unsoftened water for cooking drinking and indoor and outdoor plant watering.

Purchase a water softener with a hardness sensor that will only operate when required instead of on a set schedule.

Although a more sophisticated unit has a higher initial cost, the extra expense will be offset by more efficient salt and water use.

Fall water efficient gardening tips

Get ready for next summer's heat by planting water-efficient plants this fall. The fall is an ideal time to add water-wise plants to your gardens.

Add mulch to exposed garden soil to help hold the moisture in the soil. Mulch also helps to reduce weed growth providing you with more time to enjoy your gardens.

Aerate, top-dress, fertilize and overseed your lawn and take advantage of winter rains. Choose a mixture of grass seed that specifies its tolerance to drought.



DROPLETS

Correction

The District's 2001 Water Quality Report erroneously reported that arsenic levels detected during 2001 ranged from None Detected (ND) to 8.0 parts per billion (ppb), averaging 2.4 ppb. The correct levels detected during 2001 ranged from ND to 5 ppb, averaging 1.9 ppb.

Since our water supply comes from many different wells, the presence and level of contaminants varies throughout the District. You may request water quality information for your neighborhood by contacting the District (pref. by email). Be sure to provide your address.