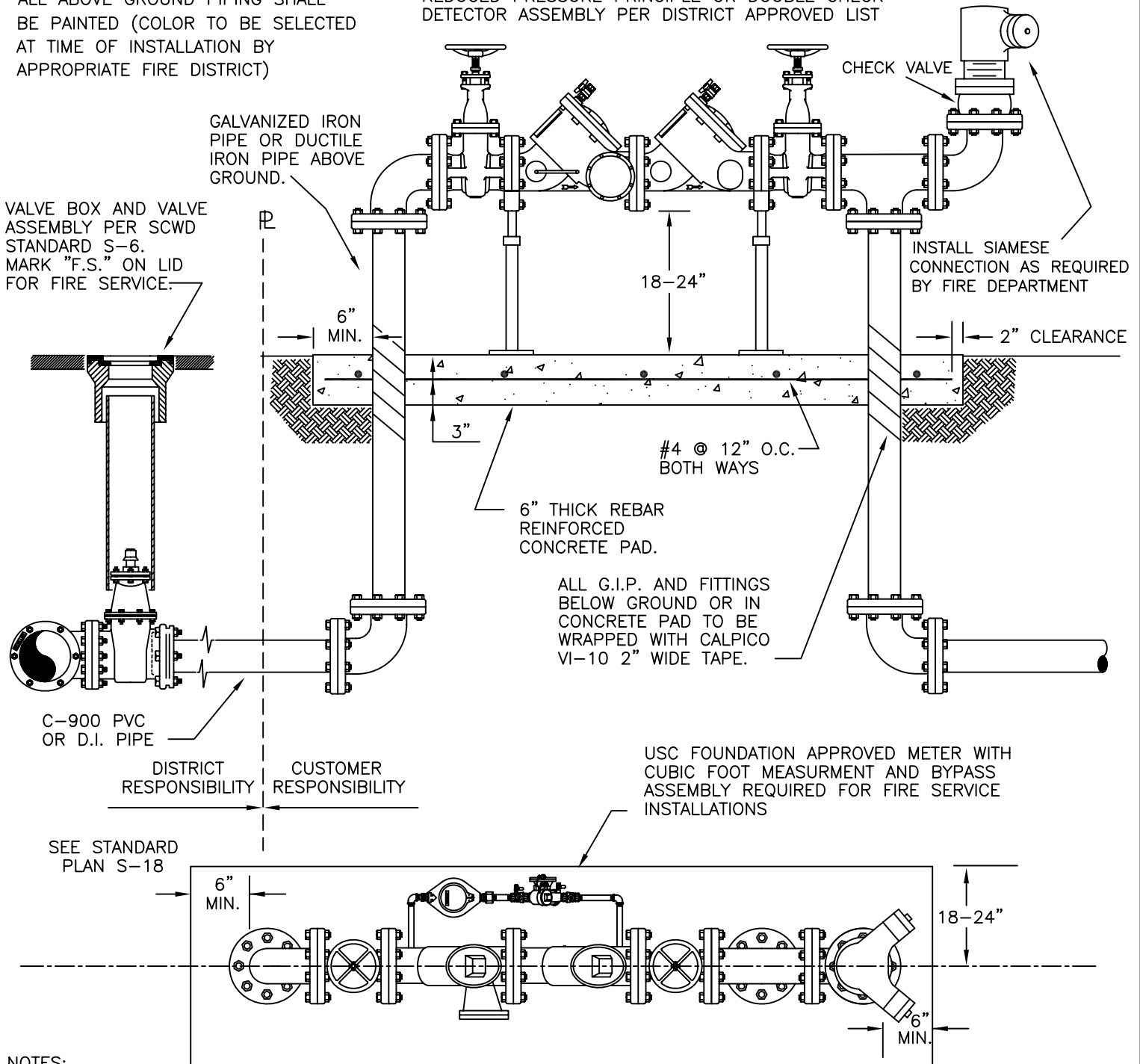


ALL ABOVE GROUND PIPING SHALL BE PAINTED (COLOR TO BE SELECTED AT TIME OF INSTALLATION BY APPROPRIATE FIRE DISTRICT)

REDUCED PRESSURE PRINCIPLE OR DOUBLE CHECK DETECTOR ASSEMBLY PER DISTRICT APPROVED LIST



NOTES:

1. ASSEMBLY SHALL HAVE A MINIMUM SIDE CLEARANCE OF TWELVE INCHES, EXCEPT THAT A MINIMUM SIDE CLEARANCE OF 24" SHALL BE PROVIDED ON THE SIDE OF THE ASSEMBLY THAT CONTAINS THE TEST COCKS AND OR RELIEF VALVE
2. ASSEMBLIES REQUIRE PIPE SUPPORTS UNDER EACH GATE VALVE.
3. INSTALLATION SHALL BE LOCATED ON THE PROPERTY SUCH THAT THE DETECTOR METER SHALL BE ACCESSIBLE AT ALL TIMES FOR READING AND MAINTENANCE PURPOSES. LOCATION MUST BE APPROVED BY WATER DISTRICT PRIOR TO INSTALLATION.
4. BACKFLOW ASSEMBLY GATE VALVES SHALL BE O.S. & Y. TYPE AND SHALL BE CHAINED IN THE OPEN POSITION.
5. DRAWING SHOWS REDUCED PRESSURE PRINCIPLE DETECTOR. CLASS I AND II INSTALLATIONS REQUIRING DOUBLE CHECK DETECTOR ASSEMBLY (DCDA) INSTALLATION SHALL BE IDENTICAL WITH THE EXCEPTION OF THE ASSEMBLY.

STD S-16

# SOQUEL CREEK WATER DISTRICT

P.O. BOX 1550

CAPITOLA, CALIFORNIA 95010

CAD: TAD

DATE: DEC-06

CHECKED: MJW

APPROVED: JNG

## 3-INCH AND LARGER FIRE SERVICE OR BACK FLOW PREVENTION ASSEMBLY

STD. NO.

S-16

1/2